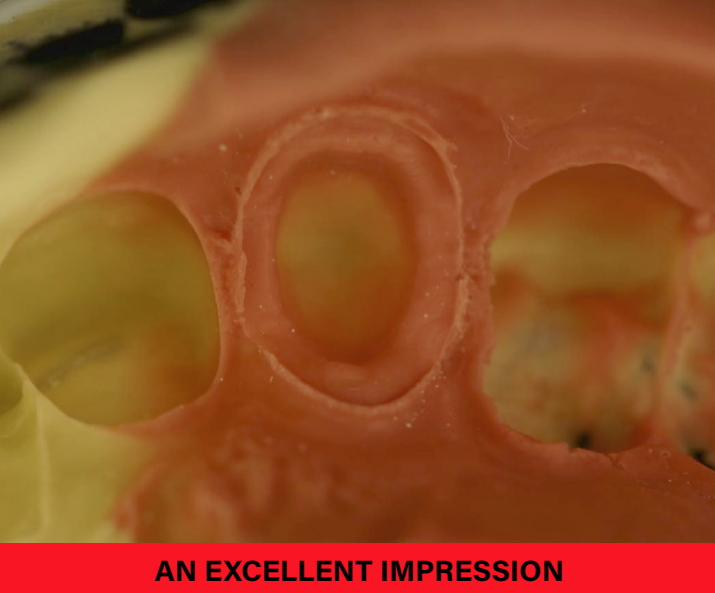




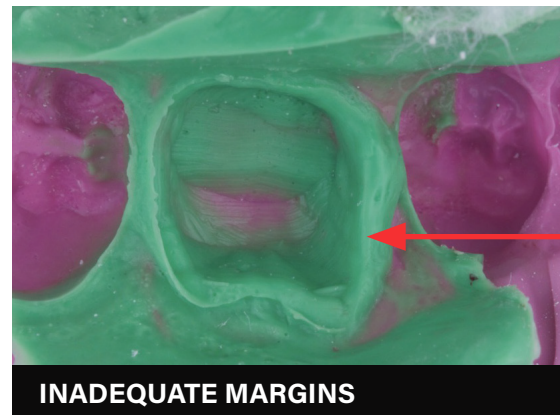
# FIXED IMPRESSIONS WORK MAT

## Most Common Problems with Fixed Impressions



**AN EXCELLENT IMPRESSION**

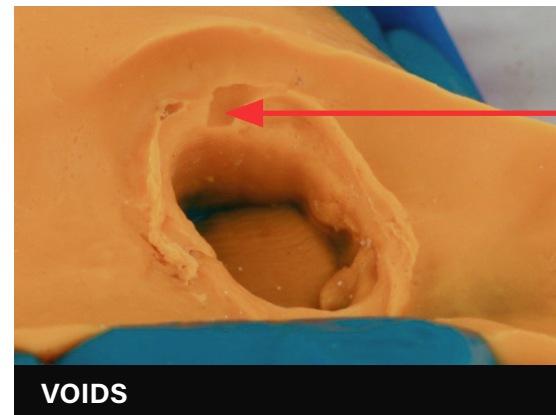
- No tearing of the wash from the putty around the preparation
- Detailed and complete margins
- No tooth contact with tray; impression centered on tray
- Tray adhesive applied properly
- Properly mixed material; no streaking
- Strong bond between tray and wash materials; no signs of debonding or ledges
- No voids; full, smooth wash material coverage



**INADEQUATE MARGINS**

**Probable Causes:**

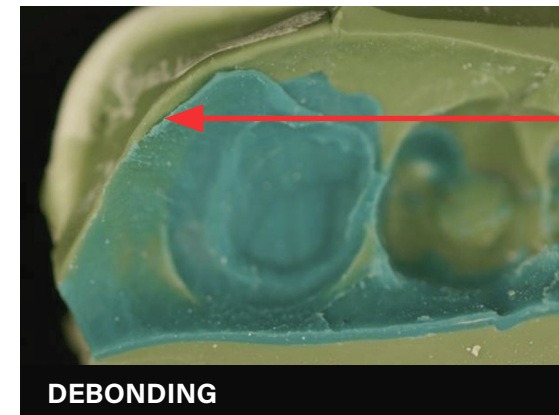
- Incomplete sulcular expansion around the preparation
- Improper moisture control around the preparation
- Exceeding the material's working time
- Tray movement after seating



**VOIDS**

**Probable Causes:**

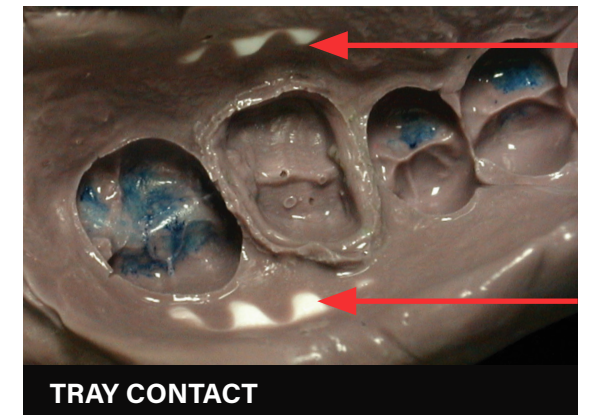
- Improper syringe technique
- Sulcular fluid/bloods/contaminants
- Incomplete sulcular expansion around the preparation
- Tray incorrectly seated
- Insufficient preparation covered by the impression material



**DEBONDING**

**Probable Causes:**

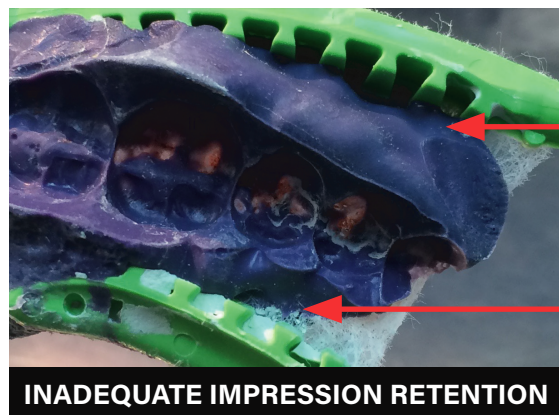
- Exceeding the material's working time
- Contamination of tray material
- Impression material stored at a temperature above manufacturer's recommendation



**TRAY CONTACT**

**Probable Causes:**

- Incorrect tray size used
- Tray not oriented correctly
- Insufficient impression material used



**INADEQUATE IMPRESSION RETENTION**

**Probable Causes:**

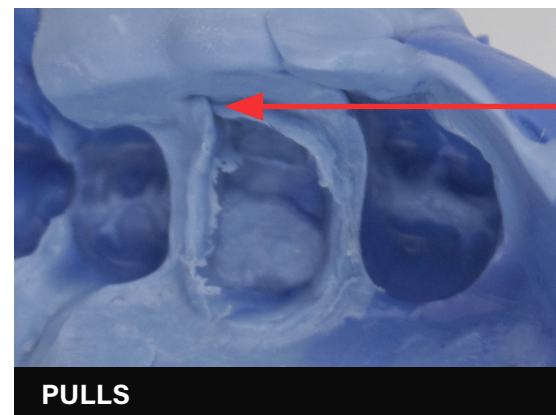
- Insufficient impression material used
- No tray adhesive used
- Inadequate tray adhesive drying time
- Outdated impression material used



**TEARING OF WASH MATERIAL**

**Probable Causes:**

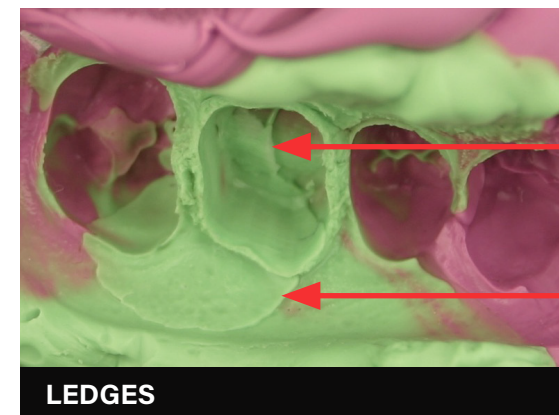
- Insufficient retraction around the preparation
- Impression removed before material has set
- Improper moisture control around the preparation
- Outdated impression material us



**PULLS**

**Probable Causes:**

- Exceeding the material's working time
- Tray movement after seating the impression
- Insufficient impression material used
- Rapid seating of the impression tray



**LEDGES**

**Probable Causes:**

- Preparation of most posterior tooth is contraindicated with dual-arch trays
- Buccal, lingual and posterior tray contact
- Lack of occlusal clearance
- Extreme mesh exposure



**TRAY ISSUES**

**Probable Causes:**

- Incomplete sulcular expansion around the preparation
- Improper moisture control around the preparation
- Exceeding the material's working time
- Tray movement after seating